



**MANDATORY**

[www.eclipseaerospace.net](http://www.eclipseaerospace.net)

ECLIPSE  
AEROSPACE

## SERVICE BULLETIN

---

**NUMBER:** SB 500-57-011, REV B  
**MODEL:** ECLIPSE EA500  
**SUBJECT:** WING ATTACH POINT INSPECTION

### 1. PLANNING INFORMATION

#### A. Effectivity

Aircraft Serial Numbers 0001 - 0300.

#### B. Reason

This Service Bulletin has been prepared to inspect wing attach points for corrosion.

Revision B adds an additional illustration to clarify inspection area and (both wing and fuselage) to inspection.

#### C. Description

This Service Bulletin provides procedures to inspect wing attach points for corrosion.

#### D. Relevant Publications

None

#### E. Compliance

Eclipse Aerospace Inc. considers this to be an mandatory inspection that must be accomplished at the next 300 hour inspection.

#### F. Approval

This Service Bulletin is based on engineering data that is FAA-approved, and the modification herein complies with the applicable regulations.

#### G. Labor Requirements

The following information is for planning purposes only.

(1) Estimated labor hours to perform:

Suggested number of personnel: 1

Job Set-up: 1.0 Hours

Inspection: 2.0 Hours

Job Close-up: 1.0 Hour

**Total labor hours: 4.0**

The above is an estimate based on properly equipped and experienced personnel complying with this Service Bulletin. Actual labor hours may vary depending on workforce experience, concurrent maintenance, discovery of other discrepancies, etc.

(2) Qualification of personnel:

- A person properly authorized under 14 CFR 43 to perform aircraft maintenance.

#### H. References

Aircraft Maintenance Manual (AMM), P/N 06-117751, latest revision.



**MANDATORY**

# SERVICE BULLETIN

## I. Publications Affected

None

## 2. MATERIAL INFORMATION

### A. Consumables

The following consumables are required for this Service Bulletin.

Material	Specification	Use
Corrosion Inhibiting Compound (CIC)	Ardrox AV 15 or Ardrox AV 8 or MIL-PRF-16173E, Class 1, Grades 1 & 4	Corrosion prevention.
Alodine	Touch-N-Prep 1132 or equivalent	Chemical conversion coating for aluminum.
Primer	MIL-PRF-23377, Type I, Class C1 or C2 or MIL-PRF-85582, Type I, Class C1 or C2	To prime bare surfaces.
Scotch-Brite	Type A (Aluminum Oxide) fine and very fine.	Corrosion removal

## 3. ACCOMPLISHMENT INSTRUCTIONS

### A. Procedure

#### (1) Job Set-up,

**SIGN OFF**

(a) Make the aircraft safe for maintenance. Refer to AMM - 20-00-01 - MAKE SAFE FOR MAINTENANCE. \_\_\_\_\_

(b) Get access to wing attach fittings as follows:

1. For left wing, remove panels as follows (refer to AMM - 06-50-00-051-801 - AIRCRAFT ACCESS PANELS (effectivity noted) for locations):

- Left Forward Wing-to-Body Fairing - 251 CL, refer to AMM - 53-11-12 - FORWARD WING TO BODY FAIRING ASSEMBLY - REMOVAL. \_\_\_\_\_

- Left Lower Wing-to-Body Fairing - 251 EL, refer to AMM - 53-11-11 - LOWER WING TO BODY FAIRING ASSEMBLY - REMOVAL. \_\_\_\_\_

2. For right wing, remove panels as follows (refer to AMM - 06-50-00-051-801 - AIRCRAFT ACCESS PANELS (effectivity noted) for locations):

- Right Forward Wing-to-Body Fairing - 252 BR, refer to AMM - 53-11-12 - FORWARD WING TO BODY FAIRING ASSEMBLY - REMOVAL. \_\_\_\_\_

- Right Lower Wing-to-Body Fairing - 252 DR, refer to AMM - 53-11-11 - LOWER WING TO BODY FAIRING ASSEMBLY - REMOVAL. \_\_\_\_\_



# SERVICE BULLETIN

**SIGN OFF**

(2) **Inspection**

(a) Visually inspect the left and right upper and lower wing attach fittings (1, Figure 1) and (2, Figure 1) (both wing and fuselage) and surrounding area for corrosion and bare (non treated) and/or scratched areas:

1. **Rework**

Refer to Figure 1.

NOTE: Do not use power tools to remove corrosion.

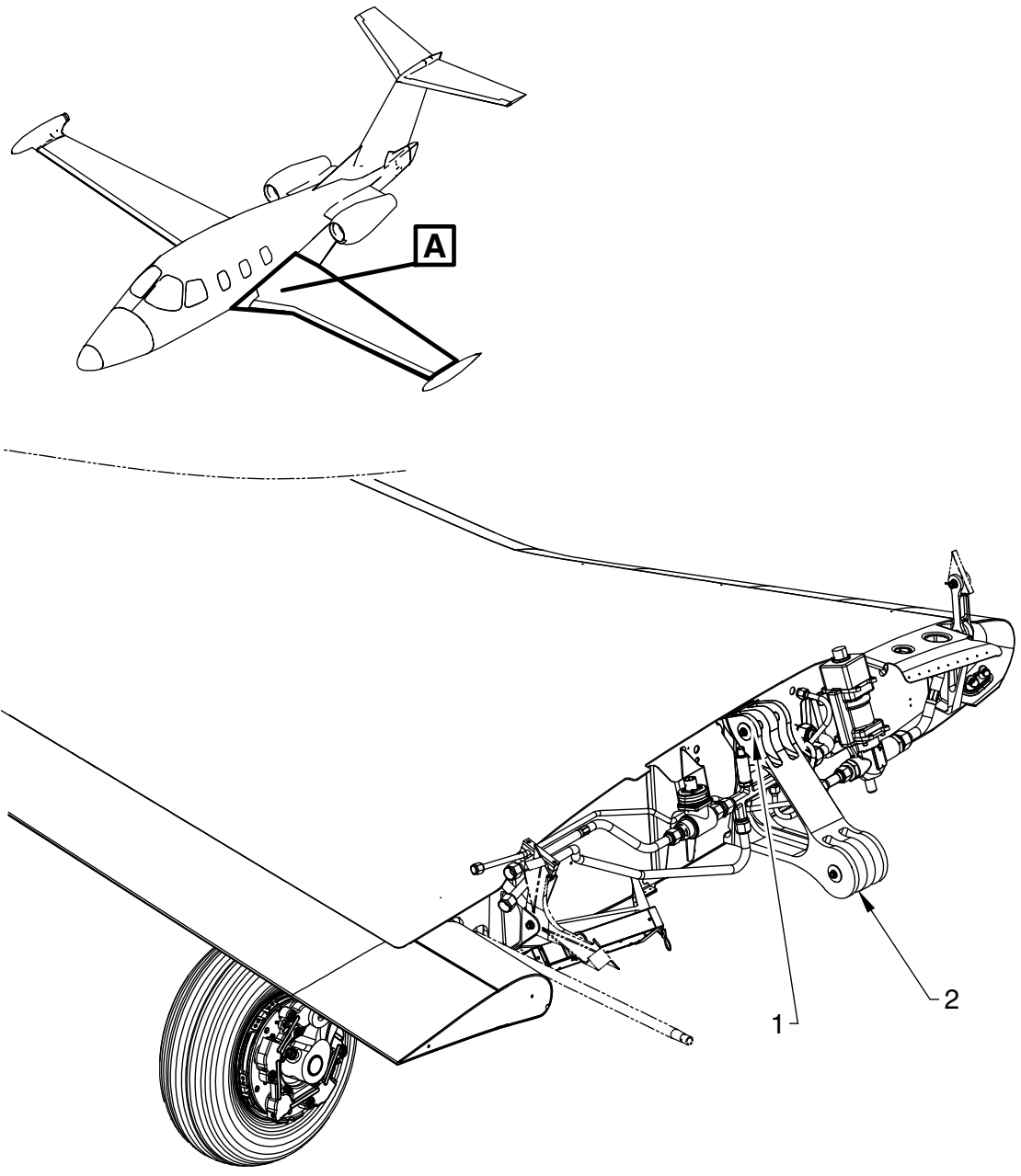
- a. If significant corrosion is found, contact Eclipse Aerospace Service Engineering for disposition. \_\_\_\_\_
- b. If minor surface corrosion (non-pitting) is found, remove corrosion using Scotch-Brite with no appreciable removal of the base material. Clean area with soap and water and allow to dry. \_\_\_\_\_
- c. Inspect area with 10X magnifying glass to ensure there is no pitting. If pitting is noted, contact Eclipse Aerospace Service Engineering for disposition.
- d. Treat bare metal areas with Alodine Touch-N-Prep 1132 or equivalent and apply Primer MIL-PRF-23377 or MIL-PRF-85582. \_\_\_\_\_
- e. Apply Corrosion Inhibiting Compound (CIC); Ardrox AV 15 or Ardrox AV 8 or MIL-PRF-16173E, Class 1, Grades 1 & 4 \_\_\_\_\_



**MANDATORY**

ECLIPSE  
AEROSPACE

# SERVICE BULLETIN



**A**

(ROTATED FOR CLARITY,  
RIGHT SIDE OPPOSITE)

**Wing Attach Fitting**  
**Figure 1 (Sheet 1 of 2)**

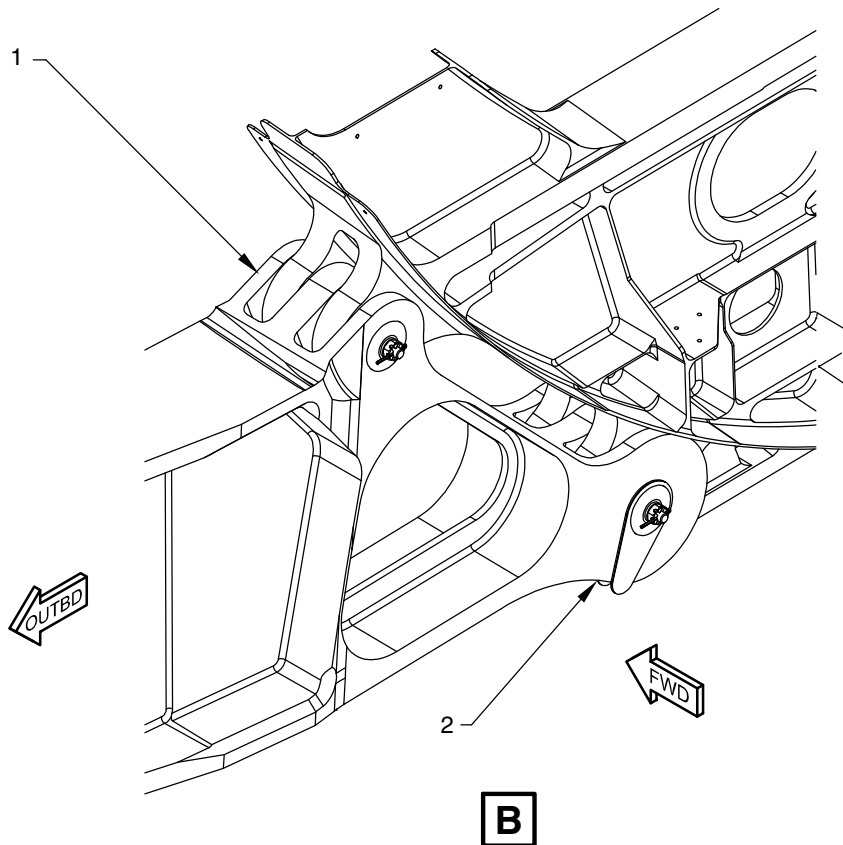
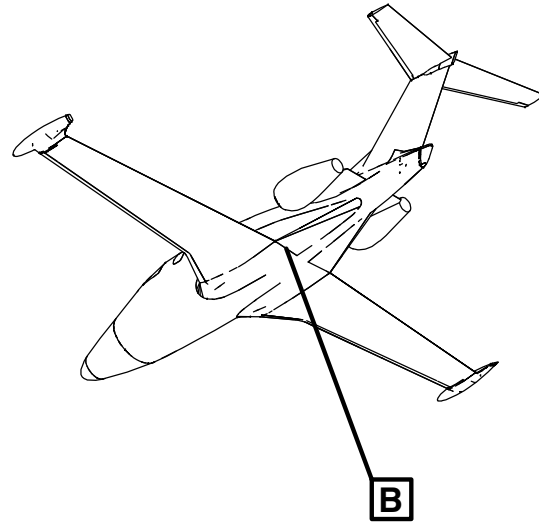
5111520B



**MANDATORY**

ECLIPSE  
AEROSPACE

# SERVICE BULLETIN



**B**  
STRUCTURE REMOVED FOR CLARITY

**Wing Attach Fitting  
Figure 1 (Sheet 2 of 2)**

5121579A



**MANDATORY**

**ECLIPSE  
AEROSPACE**

# SERVICE BULLETIN

**(3) Job Close-up**

**SIGN OFF**

(a) Install the following panels:

1. For left wing, install panels as follows (refer to AMM - 06-50-00-051-801 - AIRCRAFT ACCESS PANELS (effectivity noted) for locations):
  - Left Forward Wing-to-Body Fairing - 251 CL, refer to AMM - 53-11-12 - FORWARD WING TO BODY FAIRING ASSEMBLY - INSTALLATION. \_\_\_\_\_
  - Left Lower Wing-to-Body Fairing - 251 EL, refer to AMM - 53-11-11 - LOWER WING TO BODY FAIRING ASSEMBLY - INSTALLATION. \_\_\_\_\_
2. For right wing, install panels as follows (refer to AMM - 06-50-00-051-801 - AIRCRAFT ACCESS PANELS (effectivity noted) for locations):
  - Right Forward Wing-to-Body Fairing - 252 BR, refer to AMM - 53-11-12 - FORWARD WING TO BODY FAIRING ASSEMBLY - INSTALLATION. \_\_\_\_\_
  - Right Lower Wing-to-Body Fairing - 252 DR, refer to AMM - 53-11-11 - LOWER WING TO BODY FAIRING ASSEMBLY - INSTALLATION. \_\_\_\_\_

(b) If all other maintenance is complete, return the aircraft to service. Refer to the AMM - 20-00-02 - RETURN TO SERVICE (AFTER MAINTENANCE). \_\_\_\_\_

**B. Limitations and Procedures**

None

**C. Cost**

Contact Eclipse Aerospace Inc. for cost and availability.

**4. RECORD OF COMPLIANCE**

Upon completion of this Service Bulletin, make an appropriate maintenance-record entry specifying the Service Bulletin number.

**5. NOTIFYING ECLIPSE AEROSPACE**

On completing this service bulletin, the operator/maintainer shall complete the attached Compliance Record and send it to Eclipse Aerospace via regular mail, fax, or e-mail.

Mailing Address	Eclipse Aerospace Incorporated ATTN: Customer Care 2503 Clark Carr Loop SE Albuquerque, NM 87106
Fax	1-505-241-8802
E-mail	customerfirstteam@eclipse.aero

